

**Balayage Tinting Brush, Grey/Black**

Thick, sturdy handle with long, dense bristles are ideal for balayage. Available in grey or black.

R 36.30 - 18273



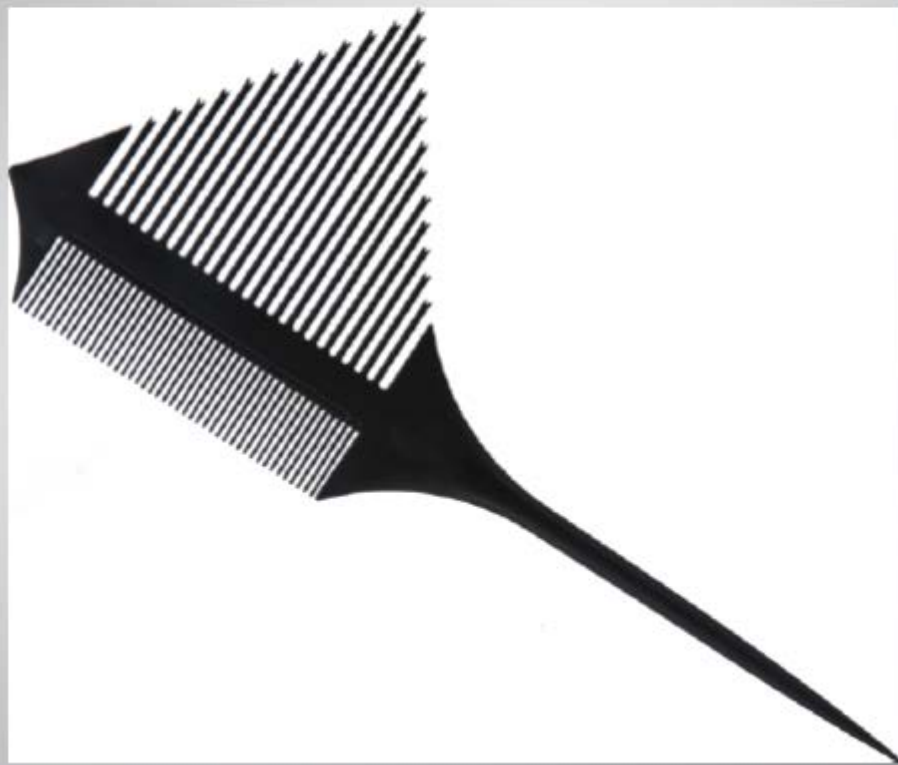
## Balayage Triangle Comb

Double-sided balayage comb. One side features traditional tail comb teeth. Other side has ascending and descending teeth lengths to form triangle shape. Teeth have special tips, ideal for balayage.

See it in action:

<https://www.youtube.com/watch?v=8V9HBYVh4wk>

R 44 - 18314



**OLIVIA GARDEN NEWCYCLE** - All purpose salon apparel for comfortable clients, quality services and maximum protection.  
Made of recycled plastic water bottles.



**All Purpose Salon Apron**  
Adjustable neck strap & ties  
at back waist.  
R 175 - 18276

**All Purpose Salon Cape**  
High quality snap stud  
closure.  
R 189 - 18278

**All Purpose Salon Gown**  
Attached waist belt.  
R 288 - 18280

**All Purpose Salon Vest**  
High quality snap stud  
closure.  
R 325 - 18279

**All Purpose Salon Jacket**  
High quality snap stud  
closure.  
R 335 - 18277

**JAGUAR GOOD VIBES SETS** - Next generation cutting and styling sets with all the fundamentals needed in the salon. Features scissors of the PRE STYLE range for incredibly dependable cutting performance. Matching scissor and thinner features unique rose finger ring inserts to match colour on bag strap.

Includes:

- Scissor
- Thinner (28 Teeth)
- Atlantic R1M Razor
- R1 Basic Blades
- Butter A-Line Cutting Comb
- Crossbag with chevron strap

Ergo - 18322

R 1 980

Relax - 18323

R 1 980

Relax Left - 18324

R 2 375

Ergo Slice - 18325

R 2 035

Relax Slice - 18326

R 2 035



## Gamma Più Hair Dryer Barber Phon Black

The hair drying choice for barbers. A traditional design in black finish to suit any barbershop aesthetic. A dedicated facial hair dryer to keep beards and moustaches looking their absolute best. One of the only hair dryers designed for this kind of coarse hair, the Barber Phon is designed for drying facial hair, while maintaining essential moisture levels.

### Features:

- Ideal temperature & airflow for drying facial hair, while maintaining its natural moisture & structure
- Cold barrel lets you hold the front end
- Grill is coated in tourmaline which ionizes the hair for extra shine
- Ergonomic grip
- Separate hair & beard settings
- 2 heat settings with cold shot button
- Includes 2 concentrator nozzles

R 1885 - 18377



## Glitter & Sequin Tint Brushes

Bling design with amber glitter & sequins inside clear handle structure. Ideal for any colour work.

Small

R 39 - 18309

Medium

R 48 - 18310

Large

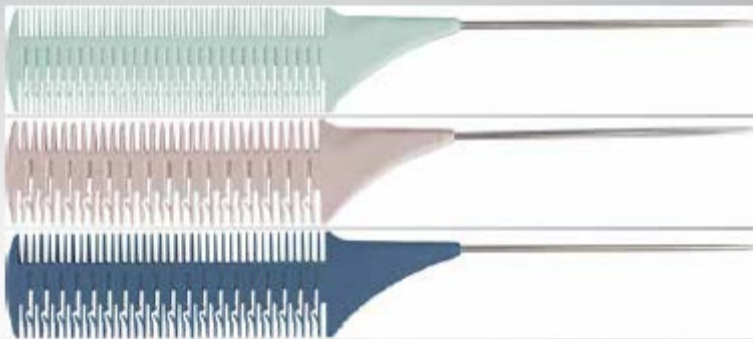
R 57 - 18312



Hilite combs for baby lights (3 combs)

R 130 - 18332

- Light blue (fine)
- pink (medium)
- blue (wide)



## JAGUAR JaguArt

Protection for those with nickel allergy, offset design.



**IN HEAVEN**  
5.5 inch  
R 2 100 - 18349



**TENDER LOVE**  
5.5 inch  
R 2 100 - 18350



**EXOTIC ISLAND**  
5.5 inch  
R 2 100 - 18351



**MAGIC GARDEN**  
5.5 inch  
R 2 100 - 18352



**JAGUAR LUMEN** - For fans of large scissors. Ergonomic offset design.

**SHEAR**

Hollow ground with convex blades make for even smoother cutting action. One cutting edge honed, one micro-serrated.

6.0 inch

R 1 450 - 18345



**THINNER**

43 thinning teeth with fine V-teeth serration for a pleasantly smooth feel & a precise cut.

6.0 inch

R 1 565 - 18346



## Jaguar J-CUT 40 Li Hair Clipper Cordless

Powerful trimmer for extremely precise short and contoured cut styles, all forms of detailed work and finishing touches on any style. Attachment combs allow for extended cutting lengths, perfect for complete styles, modeling or trimming facial hair.

### Features:

- Lightweight (136g)
- Powerful, fast-running, high-performance motor
- 3 Speed speed settings (5000, 5500 & 6000 RPM)
- High-quality stainless steel cutting plate (30mm wide)
- Quick change click system for quick cutting sessions.
- Lithium battery with LED status display
- Run time of approximately 150 minutes
- Can be used corded
- Comes with four attachment combs (1,5mm, 3mm, 4,5mm and 6mm) + care set.

R 1738 - 18344



JAGUAR  
HD CALIMA - BERRY

R 1 200 - 18455



JAGUAR  
Crossbag with 2 Adjustable Straps

- Cool leather look with pronounced grain.
- Room for 4 pairs of shears.
- Spacious zip compartment for storing other tools.
- Includes 2 adjustable straps – black & silver chevron, & black & beige camo.

R 775 - 18347



## JOC CURE REBALANCING SHAMPOO

Formula infused with the natural therapeutic power of trees. Deeply cleanses, gently removing any excess sebum & dandruff, & keeps the scalp clean. Restores the natural balance of the scalp, giving it immediate relief.

250ml - R 128 (18359)

1 Litre - R 269 (18360)



## JOC CURE SOOTHING SHAMPOO

Soothes the scalp reducing redness, irritation & itching. Extra gentle for a comfortable cleansing, it helps protect & moisturize the scalp, promoting its balance for immediate relief. Ideal for all scalp types.

250ml - R 128 (18361)

1 Litre - R 269 (18362)



## JOC CURE EXFOLIATING SHAMPOO

Formulated with Pine Leaf Extract. Performs an extra purifying peeling & delicate cleansing. Deeply exfoliates favoring cell renewal & stimulating collagen production.

Gently but effectively renews the skin by re-oxygenating it, relaxing it & preparing it to receive subsequent treatments.

200ml - R 359

18363



## JOC CURE Re-Power: Promoting Microcirculation & Counteracting Hair Loss

All Natural, and 100% Vegan - Blue Light Shield for Protection - Contains Hazel Leaf Extract to tone & give vitality  
SLES Free - PARABEN Free - COLORANT Free



### Re-Power Shampoo

Provides essential nutrients for stronger and thicker hair. It gently cleanses & restores well-being & balance.

250ml - R 128 (18355)

1 Litre - R 269 (18356)



### Re-Power Intense Treatment

Formulated with a combination of amino acids, vitamins and ingredients of plant origin. Promotes the anchoring of the hair to the follicle, preventing hair loss & promotion hair growth.

Its soothing action ensures the wellbeing of the scalp for stronger & thicker hair.

(9x8ml Ampoules)

R 359 - 18357



### Re-Power Scalp Tonic

Improve the anchoring of the hair to the bulb & the elasticity of the scalp. Strengthens & nourishes the follicle structure.

Use for a daily maintenance treatment, as an alternative to the Re-Power Intensive Treatment.

150ml - R 235

18358

## Just Water Barber Pole Fine Mist Water Spray Bottle

Multi-position, barber pole-themed spray bottle. Can be sprayed upside down.

150ml



White

R 66 - 18306



Chrome

R 87 - 18307

## K18

A simple, patented, bioactive, 2 step treatment process, & can be incorporated in any possible salon treatment. Utilising the patented K18Peptide™, K18 works on a molecular level to prepare, protect & repair hair during any in-salon service – reversing it to its most youthful, healthy state in minutes.



**Professional Molecular Repair Hair Mask**  
K18 Professional Mask is a post-service treatment that repairs damage caused during any salon service. Helps close cuticles & seal in the peptide to repair broken keratin chains, with added lightweight conditioning benefits to keep hair smooth & soft.

150ml  
R 886 - 17922



**Professional Molecular Repair Hair Mist**  
K18 Professional Mist is a pre-service treatment that strengthens hair before a chemical service. Shifts the cuticle layer to penetrate hair's inner cortex & hone in on damage sites.

150ml  
17923 - R 886



**Leave-In Molecular Repair Hair Mask**  
4-minute leave-in treatment to clinically reverse hair damage. An at-home leave-in treatment infused with patented K18Peptide™ that works on a molecular level to repair even the most extreme damage, reversing hair to its most youthful, healthy state - leaving strands soft & strong. Ideal for clients to use at home to continue their damage repair regimen. For best results, use for the first 4-6 consecutive washes following a service, then every 3-4 washes as needed to maintain hair strength.

5ml: 17925 - R 74.30  
50ml: 17924 - R 593

# KAYPRO Black To White Anti Yellow/Orange Bleaching Powder



CHARACTERISTICS	BLACK TO WHITE 9+2	BLEACH 10
<b>LIGHTENING POWER</b> Calculating the tone scale from 1 black to 12 ultra platinum	9-11 LEVELS	7-9 LEVELS
<b>ANTI-RED REFLECTION ON ALL TYPES OF HAIR</b>	FOR NUANCES FROM 5 (LIGHT BROWN) TO 8 (DARK BLOND)	FOR NUANCES FROM 1 (BLACK) TO 5 (LIGHT BROWN)
<b>ANTI-YELLOW REFLECTION FOR COLD TONES</b>	RECOMMENDED	GOOD
<b>COLD BLONDES ON ALL TYPES OF HAIR</b>	GOOD	RECOMMENDED
<b>HEAT SOURCE WITH PAPER</b>	GREAT PERFORMANCES	GREAT PERFORMANCES MOISTURIZING STRENGTH
<b>TYPE OF CREAMY EMULSION</b>	EXCELLENT	GOOD
<b>SWELLING AND VOLATILITY</b>	MINIMUM	NONE



## KAYPRO Black To White Anti Yellow/Orange Bleaching Powder

**PREMIUM BLEACHING POWDER WITH BAMBOO VEGETABLE CHARCOAL.**  
Formulated to obtain the lightest, purest blonde that is healthy, strong & shiny hair.

Provides 9 + 2 levels of lightening, from dark hair to lightest blonde without orange or yellow reflections

Thanks to the balanced formula in lightening and preservative elements, levels never obtained before can be reached, in a short time, without the need for toning, all while keeping the hair fiber in excellent condition.

- Maximum lightening
- Maximum protection for the hair
- After bleaching, hair is bright & shiny in cold blonde shades
- Perfect for all techniques & all types of hair
- Provides 11 levels of lightening
- Extraordinary results even with 20 vol & 30 vol oxidising emulsions – 9 levels of lightening for bleaching, 2 of which levels cancel in chromatic sum the unaesthetic yellow/orange tones
- Does not create stripes

R 375 - 18299



Malibu C  
Wefts & Extensions Sachet, 5g  
Prevents hair breakage / shedding  
Preps hair for successful service

R42/sachet - 17202



Malibu C  
Replenish Masque Sachet, 12ml  
Intense Moisture  
Controls frizz & adds shine  
Color lock technology

R35/sachet - 17204



## Mannequin Clamp, Black, Revised

Universal mannequin clamp that fits all mannequin heads.

R 55 - 18308



**Olivia Garden OG 3-in-1 Brush Kit**  
**OG Brush set with one handle & 3 different removable cushions.** Easy to swap and clean when needed.  
**100% sanitizable, easy to swap, eco-friendly.**

**Includes following cushions:**

- Detangler medium-thick hair
- Styler Smooth & Shine
- Detangler fine-medium hair

**R 164 - 16779**



**Malibu C**  
**Curl Wellness Kit**  
**Includes:**  
 - Shampoo 266ml  
 - Conditioner 266ml  
 - 4 x Curl Partner sachets 5g  
**R 362 - 17203**



## OG Perfect Blend Thinner 6.0 inch 25 teeth with case

### Includes:

- 6.0 inch PerfectBlend™ Thinner with 25 teeth
- ShearCare™ oil brush to keep shears lubricated
- Soft microfiber cleaning cloth
- Zipper case
- 2 x Finger ring inserts
- Adjust tension tool

R 925 - 16765



## OG Drycut Pro Shear 6.0in with case and Sleek Razor

### Includes:

- 6.0 inch DryCutPRO™ scissor + Sleek™ Razor
- ShearCare™ oil brush to keep shears lubricated
- Soft microfiber cleaning cloth
- Zipper case
- 2 x Finger ring inserts
- Adjust tension tool

R 925 - 16766



## Parlux Hair Dryer Digitalyon Air Ionizer Tech 2400W

An evolution of the flagship Alyon® hairdryer, the Digitalyon® is the best of the best from Parlux. Packed with features, this dryer redefines what a hairdryer can do. Its unique combination of lightweight design and immense power means the Digitalyon® can handle any styling and drying situation you throw at it.

### Features:

- Professional digital motor with 2400 Watts drying power
- Air Ionizer Technology ionic and ceramic technology
- Antibacterial: removes impurities from the hair
- Quiet operation with Increased lifespan of over 3,000 hours
- Hair Free System (HFS) - hair that enters the dryer is forced to the back & concentrated on a detachable removable screw
- 2 speeds & 4 temperatures with 2 nozzles included
- Cold air button
- Anti-heating front body for comfortable front grip.

R 2 483.75



Silver  
18445

Anthracite  
18446

## Parlux Hair Dryer Alyon Air Ionizer Tech 2250W, Red

Designed for ultimate performance with a lightweight & durable design.

More power at 2250W with also an increase of lifespan at 3,000 hours.

Features Parlux's HFS – Hair Free System technology. Any hair that enters the dryer is forced to the back of the dryer motor & concentrated on a removable screw that is detached from the back of the dryer.

- 2 speeds, 4 temperatures
- Instant Cold Shot Button
- Includes two concentrator styling nozzles
- 2.8m Cord with a new, built-in cable holder

R 2,015.77 - 18257



**Saphir Rubber Band Elastics, 2 Sizes, 100/Pack**

Classic rubber band hair elastics. Comes in 2 sizes, large & small.



**Black**  
**R 22 - 18315**



**Assorted Colors**  
**R 22 - 18316**



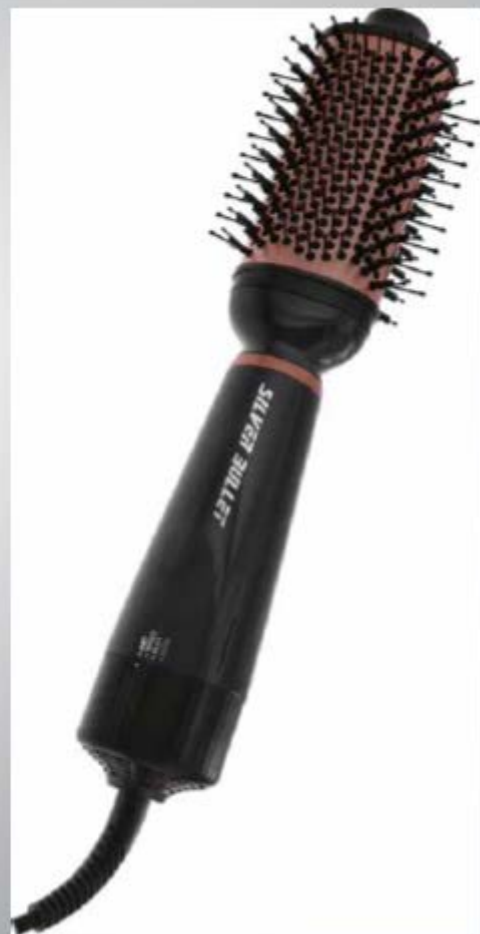
## Silver Bullet Bliss Hot Air Styling Brush 1200W

The all-in-one styling brush to style, straighten and curl hair. A professional hot air brush with an incorporated motor to blow hot air onto the hair. Light and slim enough to comfortably be used during any brushing session.

### Features:

- Hot bristles help dry, smooth and style hair at the same time
- Ideal for curling or straightening hair
- 1200 Watts of drying power
- Smart air and temperature settings for fine, medium and coarse hair
- Controls for low and high power settings
- Cold shot setting
- Combination bristles on outside of brush
- Specialized holes in brush head for uninterrupted channeling of hot air
- Thin & ergonomic
- Hot air also heats barrel for easy transfer of heat to hair
- Low noise
- Ionic generator for frizz-free results
- 3 meter 360° swivel cord

R 725 - 18313



## Silver Bullet Pink Wondercurl Waver, 210°C

Create huge waves like never before. A redesigned waver for the most intense waves. This waver's extreme barrel design is for those who like to push boundaries. Create extreme kinks and waves with its ceramic barrel. Just feed hair section into barrel and squeeze down the barrel. Release barrel when desired wave shape is achieved. Pair with a curl or wave-enhancing styling product for even more intense results.

### Features:

- Dual voltage for worldwide use
- PTC heater
- LED temperature display to set temperatures 120, 150, 170, 190 & 210°C
- Deep, double "S"-shaped ceramic-coated plates for added volume boost
- Ceramic material improves hair shine
- Ionic generator seals in natural oils
- Ideal for loose and deep curls
- Automatic shut-off after one hour
- Lock mechanism for travel
- 3 meter 360° swivel cord

R 865 - 18285



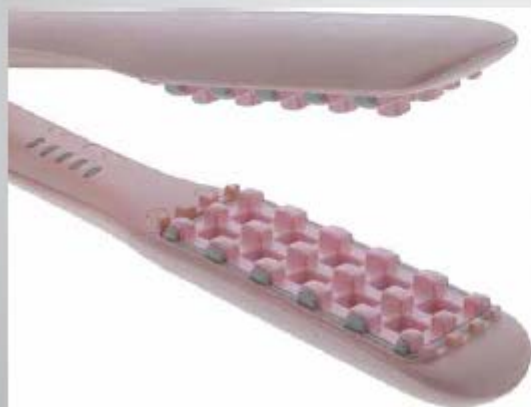
## SILVER BULLET TEXTURE VOLUMIZING IRON

Bespoke volumizing hot iron for creating intense texture & kinks, crimps & coils. Textured plates with square peaks & valleys that perfectly fit when both plates close together. Perfect for fans of textured hair. Breathes new life into dull, flat, limp, thinner hair types. Ceramic plates, in combination with heat, create lasting styles that last for hours.

### Features:

- Double checkerboard 31mm ceramic-coated plates
- Ideal for introducing kinks and texture into the hair
- LED control panel for easy temperature changes
- 5 temperature settings: 130, 150, 170, 190, & 210°C
- 60 second heat up time to max temperature
- Memory function that remembers your previous settings
- Dual voltage for worldwide use
- PTC heater
- Ionic generator creates shine
- Travel lock button
- Automatic shut-off after 30 minutes without use
- 3m, 360° swivel cord power cord

R 699 - 18354



## Wahl 5 Star Barber Hair Dryer Chrome

With its classic chrome finish and sturdy design, this dryer perfectly fits in your hair, and in any trendy barbershop.

Features:

- Ionic technology with tourmaline grill for faster drying and better shine
- 2 speed settings
- 3 heat settings Concentrated airflow
- Cold shot technology to hold styles in place
- Easy to clean removeable filter
- 2,7 meter cord
- 2200 Watt motor
- Includes 2 concentrator nozzles

R 1 150 - 18539



## WETBRUSH

### PRO DETANGLER - ZEN GARDEN 9 Piece Display

Includes:

- 3 x 18143
- 3 x 18144
- 3 x 18145

R 1 215 - 18146



## WETBRUSH

### PRO DETANGLER & FLEX DRY® COLOR ME HAPPY KIT

Neon color brush kit with two free hair coils.

Includes:

- Pro Detangler – tonal design with sci-fi color theme.
- Pro Flex Dry® – bright teal that is easy to find & use for speedy drying.
- 2 x Hair Coils – colorful bands for holding styles in place.

R 323 - 18150



## WETBRUSH

SPEED DRY® COLOR WASH - Soft, eclectic splashes of color. Vented design speeds drying time – less drying time equals happier hair. Brush design contours to scalp for extra comfort.



Watermark

R 105 - 18172

Stripes

R 105 - 18173

Splatter

R 105 - 18174